



# ICAO

## Regional Safety Briefing

### COSCAP-SA

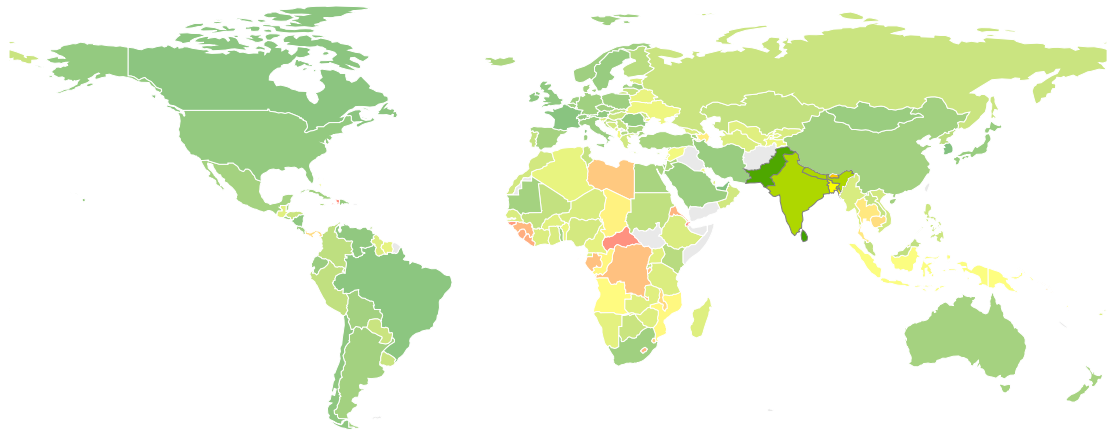
Automatically Generated by ICAO/ANB 2017-12-23

## Dashboard

Indicator	Value
<b>State Safety Oversight - Group Average</b> <small>Average USOAP Overall EI(%)</small>	65.65%
<b>State Safety Oversight - State Levels</b> <small>Percentage of States with USOAP Overall EI above 60%</small>	71.43%
<b>Significant Safety Concerns (SSCs)</b> <small>Number of SSCs</small>	0
<b>Accident Rate</b> <small>Number of accidents per mil. departures over preceding 5 years</small>	5.45
<b>IOSA - Airlines</b> <small>Number of IOSA certified airlines in the region</small>	10
<b>IOSA - State Levels</b> <small>Percentage of States with IOSA certified airlines</small>	57.14%
<b>EU Safety List</b> <small>Number of States with restrictions</small>	1
<b>FAA IASA</b> <small>Number of States rated as Category 2</small>	1
<b>PBN Implementation - Runways</b> <small>Percentage of instrument runways with PBN approaches</small>	35.8%
<b>PBN Implementation - State Levels</b> <small>Percentage of States having PBN approaches on all instrument runways</small>	66.67%

# Universal Safety Oversight Audit Programme (USOAP)

## Global USOAP Results

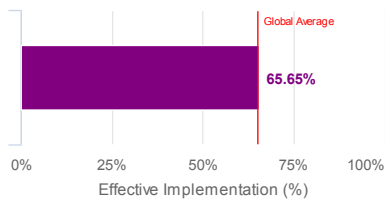


COSCAP-SA contains 7 States. All States in that region have received a USOAP CMA audit.

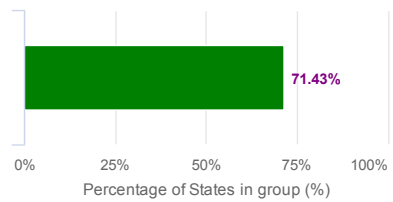
The current average USOAP score for States in COSCAP-SA is 65.65% which is above the world average of 65.05%.

71.43% of the States in COSCAP-SA have achieved the target of 60% EI, as suggested by the Global Aviation Safety Plan (GASP)

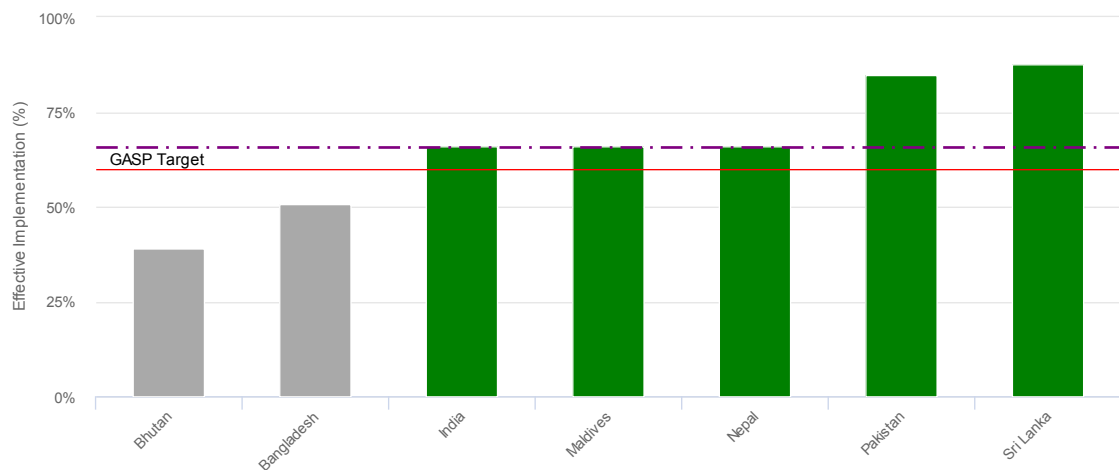
Overall EI



States above 60% EI

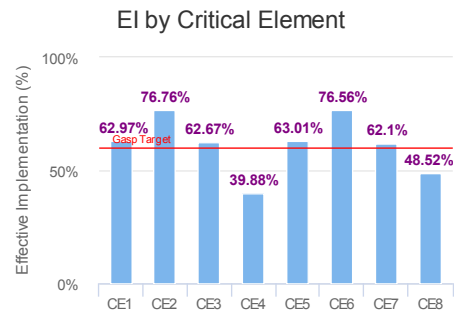
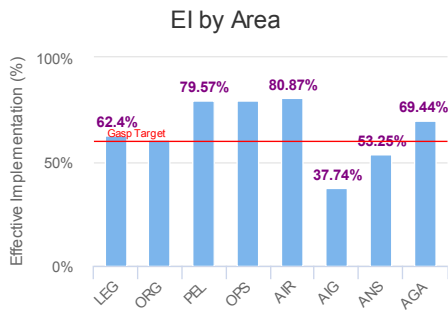


## USOAP Audit Results



# USOAP Results by Area and Critical Element

6 areas and 6 critical elements are above the target of 60% EI.



## Significant Safety Concerns (SSCs)

SSCs indicate that a State is not providing sufficient safety oversight to ensure the effective implementation of applicable ICAO Standards. SSCs may be issued in the area of operations, air navigation services, aerodromes, airworthiness or licensing.

There are no States with SSCs in COSCAP-SA.

## Safety Partner Programs

The Federal Aviation Administration (FAA) rates States through their International Aviation Safety Audit (IASA) programme. This categorization does not allow air carriers from Thailand to operate to the United States of America.

In COSCAP-SA, 1 State is rated Category 2: Bangladesh

The European Commission can decide to ban certain airlines from operating in European airspace, if they are found to be unsafe and/or they are not sufficiently overseen by their authorities.

In COSCAP-SA, 1 State has operational restrictions with regard to European airspace: Nepal

# Accident Statistics

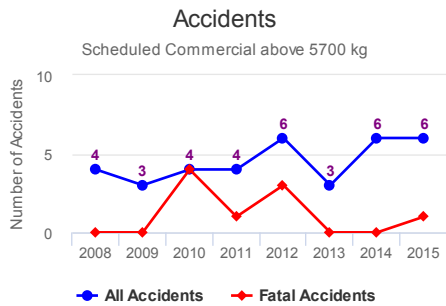
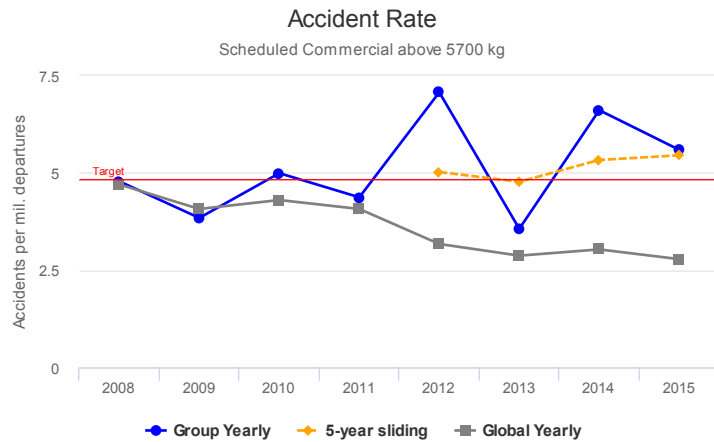
COSCAP-SA had 1 fatal accident on scheduled commercial flights with aircraft over 5.7t in 2015. In total, those accidents caused 1 fatality.

COSCAP-SA has an accident rate of **5.59** accidents per million departures in 2015 trending up.

The current 5-year sliding average accident rate for COSCAP-SA is **5.45**.

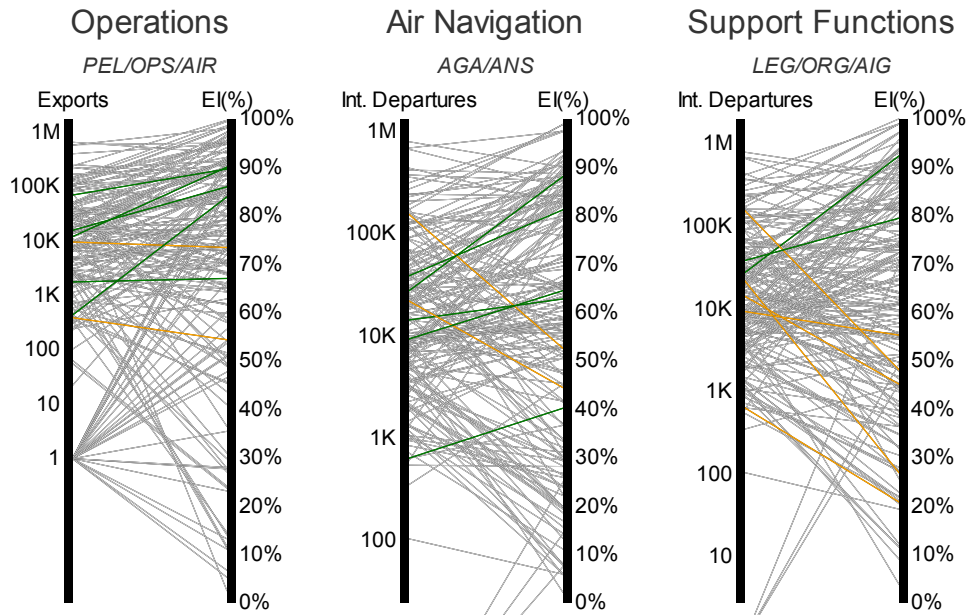
To be in line with the global accident rate and taking into account the traffic volume of COSCAP-SA, the yearly accident rate for COSCAP-SA should be between 0.72 and 4.84. The latest accident rate for COSCAP-SA is **5.59** which is not in line with the global rate.

The latest accident rate of COSCAP-SA is significantly higher than the global rate.



# Regional Priorities

The States are prioritized by considering the level of implementation (EI) as well as the related activity at risk in the areas of operations, air navigation and support functions. The profile of each State is benchmarked against all other ICAO Member States. Priority is given to the least performing areas in ascending order.



## Top-5 States in each Priority area

- Bhutan**  
Safety margin: -14.69%
- Bangladesh**  
Safety margin: -2.61%
- India**  
Safety margin: 4.83%
- Nepal**  
Safety margin: 7.2%
- Sri Lanka**  
Safety margin: 11.04%

- India**  
Safety margin: -36.85%
- Bangladesh**  
Safety margin: -19.55%
- Nepal**  
Safety margin: -1.35%
- Bhutan**  
Safety margin: 4.09%
- Maldives**  
Safety margin: 5.08%

- Bangladesh**  
Safety margin: -43.83%
- India**  
Safety margin: -36.72%
- Bhutan**  
Safety margin: -27.75%
- Nepal**  
Safety margin: -14.41%
- Maldives**  
Safety margin: -9.59%